

BIBF



Your Gateway to
International Education
In Bahrain

BACHELOR'S DEGREE

<https://www.bibf.com/academics/>

Awarding Body



**UNIVERSITY
OF LONDON**

Academic Direction



THE LONDON SCHOOL
OF ECONOMICS AND
POLITICAL SCIENCE

HEC Approval No: 1/ 2023 / پ / پ

BIBF



معهد البحرين للدراسات المصرفية و المالية
BAHRAIN INSTITUTE OF BANKING AND FINANCE

Introduction

The BIBF is a semi-government training institute affiliated with the Central Bank of Bahrain, established in 1981. The Institute plays a vital role in the training and development of human capital in Bahrain and beyond.

The BIBF's commitment to excellence has strengthened its position as the leading educational provider across all major business disciplines. The Institute serves as a partner to numerous world-class institutions; delivering Thought Leadership, Assessment and Training in the areas of Banking, Islamic Finance, Executive Development, Accounting and Finance, Academic Studies, Leadership and Management, Insurance, Digital Transformation and Project Management and Supply Chain Management; resulting in a complete business solution.



Student Lounge



Global Reach



The BIBF qualifies over 20,000 learners a year across all major business disciplines and economic sectors. Since its establishment, it has provided training and development opportunities in 64 countries giving the institute a global footprint.

The BIBF has delivered training to over

360,000

Students since its inception in 1981





Welcome message from The BIBF

I am delighted to introduce the University of London BSc in Economics and Management, with academic direction from the London School of Economics and Political Science. As a Registered Centre of the University of London, the BIBF is proud to bring this internationally renowned programme to Bahrain.

The University of London is one of the oldest and most distinguished universities in the world and LSE, one of its constituent colleges, has a global reputation for excellence in the fields of economics, management, finance and the social sciences.

Thanks to the BIBF's relationship with the University of London, students in Bahrain are able to study for this prestigious degree without leaving Bahrain and for a fraction of the cost of undertaking their studies in the UK. As one would expect of a degree from one of the world's top universities, this programme is demanding and successful completion requires a high level of effort and dedication.

The BIBF's highly qualified and experienced faculty members provide students with all the support and guidance they need to achieve maximum success. Previous graduates of this global programme have gone on to hold senior positions in both public and private sectors and have gained admission to some of the world's leading graduate schools, including University of Oxford, University of Cambridge and LSE itself. I am confident that our future graduates of the programme will go on to make a significant mark and will contribute positively to the economic life of Bahrain and beyond.

I look forward to welcoming you personally to the BIBF.

Yours sincerely,

Dr Ahmed Abdul Hameed Al Shaikh

Director, BIBF



Welcome from the University of London

The University of London is the world's oldest provider of degrees through distance and flexible learning. Our internationally renowned awards have been accessible to students across the world since 1858. Today, we are proud to have over 51,000 students in over 180 countries, studying for a range of programmes at undergraduate and masters level. Although the mode of delivery is different, the degree which they are awarded is the same standard as those awarded to our students studying full-time in London.

We have over 100,000 alumni worldwide, including many people who have helped shape the world we live in: leaders of business and industry, judges, authors, scientists and politicians, including seven Nobel Prize winners.

Our proud tradition is matched by our cutting-edge innovation today. We are continually researching and developing new modes of delivery and new programmes.

Teaching Centres have played a central role in the success of the University of London. Not only have they helped the University to realise our vision of providing life-changing, high-quality university education to those who can benefit; but they have also supported and enhanced the learning experience of countless students.

The Bahrain Institute of Banking and Finance (BIBF) is a recognised Teaching Centre of the University of London, having gained Registered status within our Teaching Centre Recognition Framework. This means that in the considered view of the University of London it demonstrates commitment to developing and maintaining high standards in respect of teaching and support to students. We believe that being part of this framework and working closely with the University of London will contribute to BIBF's ongoing development; and enable it to support our students in achieving ever greater results.

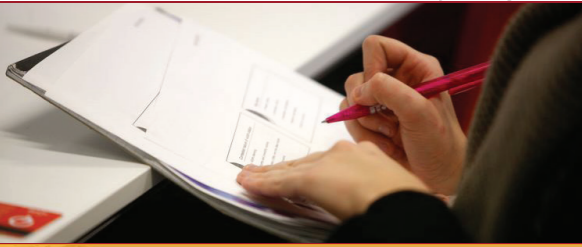
We want our students to feel part of the University of London as well as being part of BIBF. I welcome you to the University, and wish you every success with your future studies, and with your career plans.

Dr Mary Stiasny, OBE

Pro-Vice-Chancellor (International)

University of London

BIBF



The University of London is known to be a world leader in higher education and is one of the largest and most diverse universities in the UK having been founded in 1836.

The London School of Economics and Political Science (LSE) is one of the University's member institutions and is ranked 1st in the UK and Europe for Social Science research, and 2nd in the world for social science and management studies according to the 2020 QS World University Rankings.





Undergraduate study in Economics, Management, Finance and the Social Sciences (EMFSS)

A degree from the University of London is a mark of excellence, respected by employers and universities worldwide. This is because the University of London is one of the world's leading universities, internationally recognised for its high academic standards. This reputation is based on the outstanding teaching and research of its 17 world-class institution and 9 specialist institutes.

Since 1858, University of London degrees have been accessible to students all over the world through the University of London. Alumni of the University of London have gone on to shape our world. These include six Nobel Prize winners, leaders of Commonwealth countries, government ministers, renowned authors, academics, judges and business leaders. Today, the University of London is truly international in character with over 50,000 students in more than 190 countries.

Academic direction for all of the programmes offered through the University of London is provided by Member Institutions of the University. Academics at these Member Institutions develop the syllabuses, prepare the study materials, and are responsible for the assessment of students. This means that

students benefit from the academic rigour and leading-edge research undertaken by the Member Institutions. It also helps to ensure that University of London qualifications are of the same high academic standard, however they are achieved.

In the case of the undergraduate programmes in Economics, Management, Finance and the Social Sciences (EMFSS), academic direction is provided by the London School of Economics and Political Science (LSE). LSE is a small, specialist, university with an international intake and a global reach whose research and teaching span the full breadth of the social sciences, from economics, politics and law to sociology, anthropology, accounting and finance. Founded in 1895 by Beatrice and Sidney Webb, LSE has an outstanding reputation not only for academic excellence, but also for extensive engagement with the worlds of government, policymaking and business.

On successful completion of your studies you will be awarded a University of London degree, diploma or certificate. The certificate you receive will state that you were registered with the University of London and that examinations were conducted by LSE.

ACADEMIC DIRECTION

Everything you will learn in your degree will be from LSE



Learning
Resources



Research



Examinations

TEACHING CENTRES

Everything you taught will be by the BIBF



Teaching



Campus



Peers

TEACHING CENTRES

Everything you taught will be by the BIBF



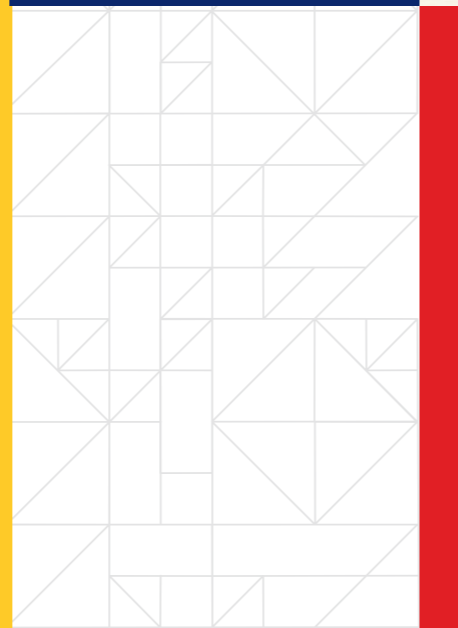
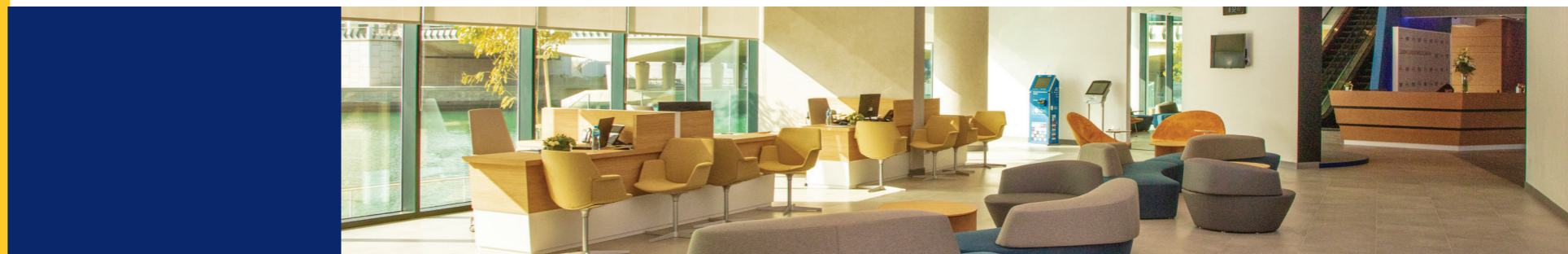
Degree



International
Recognition



Alumni
Community



Application Deadline

Application can be submitted until
3rd week of September each year.

Start Studying

Classes start in October

Start Studying

Study materials are usually available
from mid-October

Examinations Take Place

May/June

Prospective students may learn the details
of the programme and apply online at:

<https://www.london.ac.uk/courses/economics-and-management>

<https://www.london.ac.uk/courses/data-science-and-business-analytics>

Click on the 'BSc Economics and Management' button
below 'Apply Online'.

It is recommended that students visit BIBF for assistance
with online applications.* In order to ensure you get a place
before all seats are filled it is suggested you apply and
register as soon as possible.

Application forms are available at BIBF. You can also obtain
one by email or download from our website:

www.bibf.com

06



Schedule of Programme Fees*

Economics, Management, Finance and the Social Sciences (EMFSS)
Member Institution: London School of Economics and Political Science (LSE)

The Programme Fees

Year 1 **2 Half Courses worth 15 credits each. 3 Full Courses worth 30 credits each.**

BIBF Fees:

BIBF Teaching Centre Application Fees: BHD 30

BIBF Teaching Centre Tuition Fees
BHD 1000 per course | BHD 4000 per year
Book Fees: Varies per subject

Year 2 **4 Full Courses worth 30 credits each.**

BIBF Fees:

BIBF Teaching Centre Tuition Fees
BHD 1000 per course | BHD 4000 per year
Book Fees: Varies per subject

Year 3 **4 Full Courses worth 30 credits each.**

BIBF Fees:

BIBF Teaching Centre Tuition Fees
BHD 1000 per course | BHD 4000 per year



Course Structure:

All the EMFSS programmes are made up of units of study called courses. Each course covers a specific topic and is examined separately. Your EMFSS programme will be made up of 12 courses, 11 of which you must pass to obtain your degree. Full courses are worth 30 credits, whereas half courses are worth 15 credits. It is recommended that students study 8-10 hours a week per course (35-40 hours for a full-time student). BIBF provides 4 hours per week of formal class instruction per course as well as regular quizzes. Additional support classes, office hours, workshops and occasional guest lectures for interested students will also be made available. Students wishing to receive a Certificate of Attendance from the BIBF must be present and accounted for at least

80% of allocated formal class time. Students have between 3-8 years to complete the programme. Full-time students should finish in 3 years (not including a foundations year). The format and mode of assessment for this programme may change due to events or circumstances beyond our control. Students will be informed of their assessment arrangements via their Virtual Learning Environment (VLE), once confirmed. For the latest information on examinations, please [visit: london.ac.uk/exams](https://london.ac.uk/exams)

For a full list of courses please visit:
<https://london.ac.uk/courses>

Programme Structure:

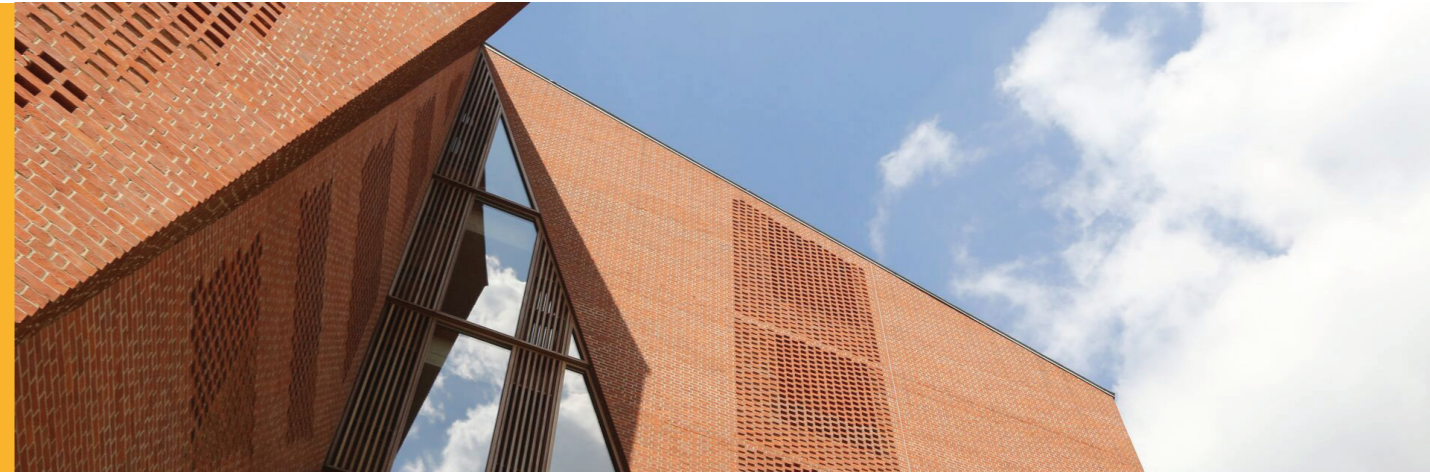
The Bachelor of Science degree

STANDARD ROUTE

12
Courses

Economics and Management:

This programme has been designed for those who wish to shape the future of business and society. After completing your studies, you will emerge as a well-rounded economist, ready to interpret abstract questions into quantifiable solutions. The first year of the programme will give you an introduction to economics and develop your quantitative skills. During the second year you will explore more deeply the three core areas of microeconomics, macroeconomics, and econometrics. In your final year, you will study higher-level economics courses but can also select from courses in other key subject areas to help shape the next step in your career.



Programme Learning Outcomes:

- give students a sound grasp of the principles of economic analysis to the intermediate level.
- help students understand the social science basis and inter-disciplinary nature of Management.
- give students a knowledge of the workings of the economy.
- encourage students to develop intellectual flexibility and powers of rigorous analysis, by placing a premium on developing minds and on bringing forward their analytical reasoning ability.
- develop in students the ability to apply their knowledge to the solution of theoretical and applied problems in economics and management.
- provide a basis for further study and for employment, including careers in relevant fields.



PROGRAMME STRUCTURE:

MODULE CODE	MODULE NAME	MODULE LEVEL	CREDITS
YEAR 1			
EC1002	Introduction to Economics	100	30
MT105A	Mathematics	100	15
ST104A	Statistics	100	15
AC1025	Principles of Accounting	100	30
MN1178	Business and Management in a Global Context	100	30
YEAR 2			
MN2177	Core Management Concepts	200	30
EC2066	Microeconomics	200	30
FN2190	*Asset Pricing and Financial Markets *	200	30
MN3211	*Human Resource Management *	300	30
YEAR 3			
IS3167	*Management and Innovation of E-Business *	300	30
EC2065	Macroeconomics	200	30
IR3210	*International Political Economy *	300	30
MN3141	*Marketing Management *	300	30

IMPORTANT NOTE: * Modules are electives and can be subject to change depending on the student's interests and availability during the academic year so long as the electives meet the programme structure criteria.

Data Science and Business Analytics:

The Data Science and Business Analytics degree provides the essential training in probability, statistics, mathematics and computing skills for the visualization and analysis of large datasets, deriving valuable insights from data. The programme has a strong focus on methodology, but also on applications in finance and economics as well as in business, marketing and beyond. Developed in response to the clamorous demand for data scientists across every business area, these programmes equip students with the knowledge and skills to capture the potential of big data to deliver transformational solutions to real world problems.

Programme Learning Outcomes:

- conduct data analysis and draw actionable conclusions from computer output.
- use complex mathematical and statistical models to tackle real-world problems.
- navigate the intersection of business, management, and data.
- provide a basis for further study and for employment, including careers in relevant fields.



14

PROGRAMME STRUCTURE:

MODULE CODE	MODULE NAME	MODULE LEVEL	CREDITS
YEAR 1			
EC1002	Introduction to Economics	100	30
MT1186	Mathematical Methods	100	30
ST1215	Introduction to Mathematical Statistics	100	30
MN1178	Business and Management in a Global Context	100	30
YEAR 2			
ST2187	Business Analytics, Applied Modelling and Prediction	200	30
ST2195	Programming for Data Science	200	30
ST2133	Advanced Statistics: Distribution Theory	200	15
ST2134	Advanced Statistics: Statistical Inference	200	15
IS3167*	Management and Innovation of E-Business*	300	30
YEAR 3			
ST3189	Machine Learning	300	30
ST3188	Statistical Methods for Market Research	300	30
IS3183*	Management and social media*	300	30
IS2184*	Information Systems Management *	200	30

IMPORTANT NOTE: * Modules are electives and can be subject to change depending on the student's interests and availability during the academic year so long as the electives meet the programme structure criteria.



16



UNIVERSITY SERVICES AND SUPPORT

Your study materials are available through the Student Portal and are specially written by academics appointed by LSE. These include a Student Guide and the programme handbook; online course materials for each course studied; past examination papers and examiners' commentaries; and Programme Regulations containing full details of syllabuses, programme structures and degree classification criteria.

ONLINE SUPPORT

When you register, we will give you access to your Student Portal. You can then access your University of London email account and other key resources:

- The Virtual Learning Environment (VLE). Here, you can access electronic copies of all printed study materials, resources including audio-visual and revision guides, and forums to discuss course material and work collaboratively with others.
- The Online Library (Opens in new window) (Opens in new window) provides access to over 100 million academic electronic items comprising E-books, E-journals, conference proceedings, etc. In addition, students can request items which are not held in the library via the library's Inter-Library loans service with the British Library.
- Senate House Library provides free reference access for all registered distance and flexible learning students.

STUDENT SUPPORT

We are committed to delivering an exceptional student experience for all our students, regardless of which of our programmes you are studying and whether you are studying independently or with a Recognised Teaching Centre.

You will have access to support through:

- The Student Advice Centre – provides support for application and Student Portal queries.
- TalkCampus – a peer support service that offers a safe and confidential way to talk about whatever is on your mind at any time of day or night.

ASSESSMENT

Each module is assessed by an unseen written exam, which is usually held in May or June. You can sit your exams at any approved centre around the world. These centres charge a fee for hosting the exams.

Your exam is set and assessed by academics at LSE, ensuring that your degree is of the same standard as those studying on-campus in London.

If you study courses from the IS selection group, you will also need to undertake a project or coursework.

Admission Requirements:

1. Statement of Graduation from the Ministry of Education.
2. Passport Copy.
3. CPR (ID CARD) Copy.
4. Medical Report from a Public/ Approved Health Care Provider.
5. Proof of English language proficiency:
 - a. IELTS score 6.0 (with a minimum 5.5 in each component)
6. General Secondary Education Certificate provided that 60% or above is achieved on a subject for subject basis in the final year of schooling. Mathematics passed at 80% and above in final year of schooling (preferred/desirable).
7. The Shahadat Al-Thanawaya AlAama is considered comparable to the General Secondary Education Certificate ((UK GCSE), grades A*-C) standard in the UK6.

IMPORTANT NOTE:

• For students interested/enrolled in the BIBF International Foundation Programme leading to B.Sc. Data Science and Business Analytics, students must obtain an Acceptance Letter for Enrolment from UoL which will be considered after a score of 90% and above in Introduction to Mathematics & Introduction to Statistics.

• Exemptions from the International Foundation Programme are to be considered if a candidate has completed either the IBDP, Indian Boards or GCSE (A Levels) with the required scores and modules. (Admission Criteria information can be found here: <https://www.london.ac.uk/courses/bscdata-science-and-business-analytics#entry-requirements-19508> or <https://www.london.ac.uk/courses/bsc-economics-and-management#entry-requirements-19540>)





A Supportive Environment

Academic advice and support for individual students:

- Individual Math tutoring will be available to all students on request
- Support and remedial sessions also available as needed
- Student extracurricular activities through student council
- A wide range of activities are made available to students

According to a recent survey (2021), about 66% of **BIBF's graduates are employed** within 3 months after graduation.

Employability

Being the main training hub for the Banking and Financial sector, The BIBF has extensive links with the industry. Our recent graduate destination survey shows that about 85% of our graduates find a job within 1 year of graduation. It also shows that our graduates are very likely to find a job that is relevant to the degree programme that they completed with us, which is evident in the table below.



ALUMNI INCLUDE:

NOBEL PRIZE WINNERS, POLITICIANS,
TEACHERS, BANKERS, FINANCIAL
MANAGERS, LAWYERS
AND 19 LEADERS
OF BUSINESS
AND INDUSTRY.



Employers Feedback

Students Testimonial

“BIBF graduates have continuously proven to possess a remarkable balance of strong technical knowledge and interpersonal skills, which add great value to the workplace.”

Ali Al-Marzooq

Senior Manager, Talent Management
Human Resources



“This programme has developed me as a person and improved my skills in analysing current global, economic situations. I also had the chance to be part of a global community of students enrolled in the same programme worldwide and exchange information via the Virtual Learning Environment (VLE).-

Fatema Al Bastaki

“BIBF graduates have proven that they are well prepared for the job market. Most of the candidates were extremely professional”

Sara Bucheri, Assoc CIPD

Deputy Manager - Human Resources



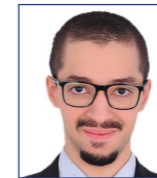
“I’m grateful for the BIBF as they’ve enabled me to become part of my dream university without having to relocate myself. The best thing about this programme is that you get to decide everything for yourself, you’re not limited to specific modules every year; therefore, your experience is unique from the beginning to the end.”

Noof Faisal

“BIBF constantly produces high caliber candidates that are equipped with quality education and skills enabling them to thrive in a professional working environment.”

Salman Alzayani

Head of Human Resources
Bahrain Bourse



“It was a spectacular opportunity being able to attain a degree from such a prestigious institution, from the comfort of my home country. I will always be grateful as the BIBF provided me with this opportunity. Furthermore, I was able to meet wonderful people, new friends and wonderful professors, throughout this enriching experience. I am truly proud to be an LSE graduate.”

Abdulrahman Janahi



CONTACT US

 +973 1781 5555 / 5517

 academics@bibf.com

Download Now



TheBIBF

www.bibf.com

